
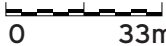


Legend











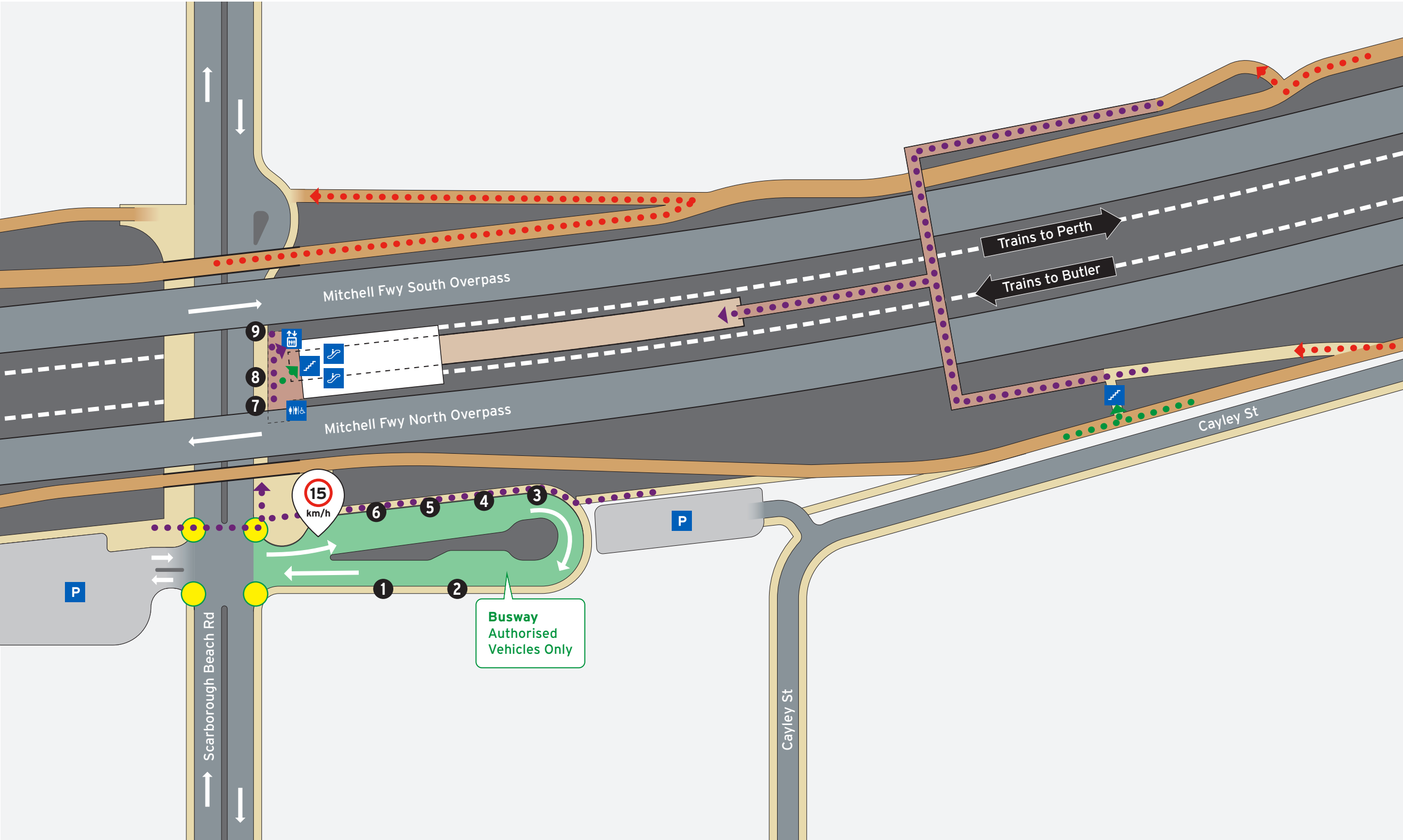
North Point

Scale



0 33m

 Transperth Parking	 Road	 Platform	 Busway
	 Pathways	 Concourse & Ramp	
	 Non-Accessible Area	 Principal Shared Path	



Bus Stands

Stand	Route
1	406
2	85, 413
3	15
4	414
5	990 to Perth
904	Train replacement to Perth
6	Set Down
7	990 to Scarborough
8	School Specials
904	Train replacement to Butler Stn
9	407

Legend

North Point

Scale

0 30m

Pedestrian Crossing Lights

Bus Stand Number

Walking/Accessible Path

Pedestrian Access

Bicycle Access

Toilets - Male & Female Accessible

Stairs

Escalator

Lift

Transperth Parking

Road

Pathways

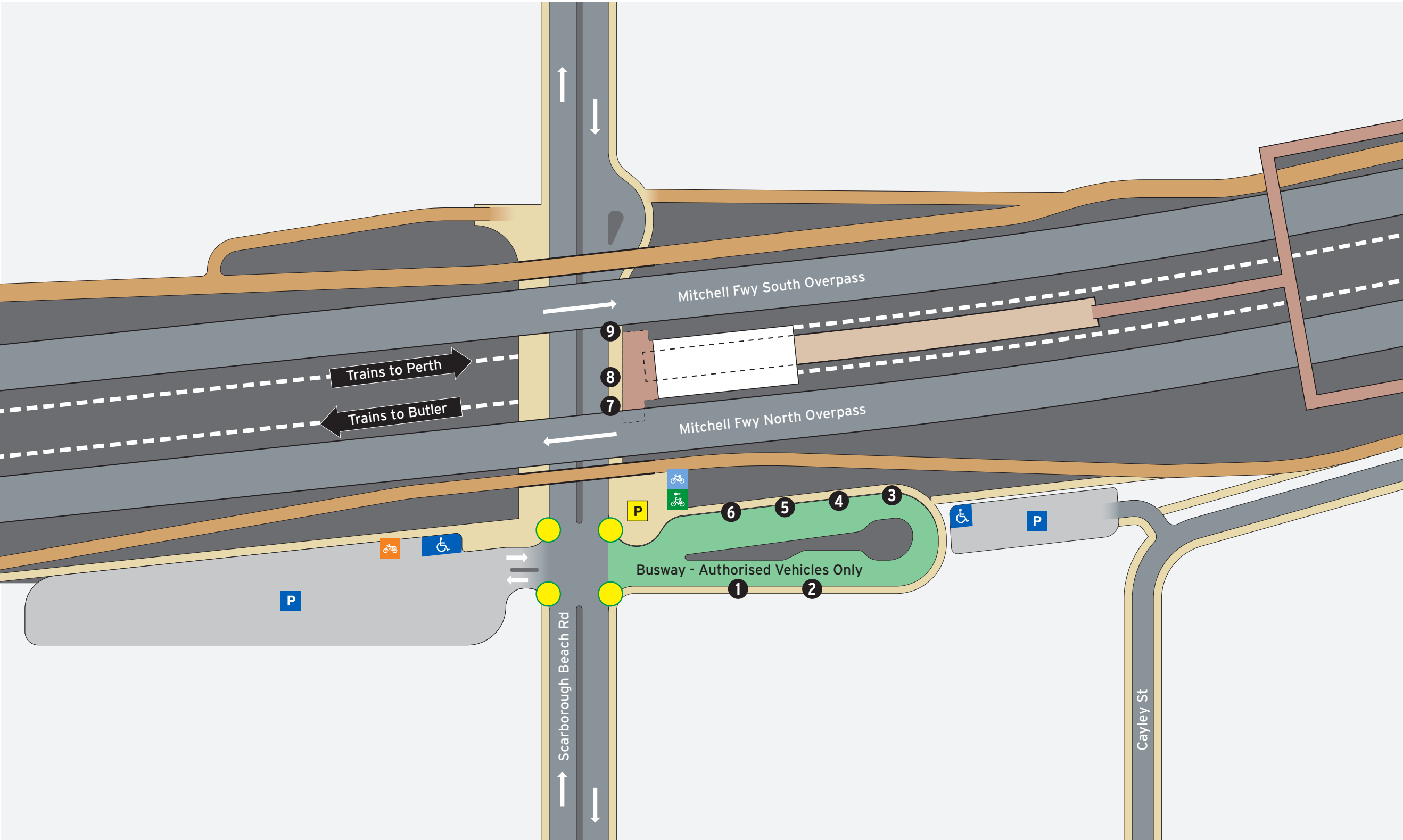
Non-Accessible Area

Platform

Concourse & Ramp

Principal Shared Path

Busway



P | **Parking Information**

When to pay

Operating Times

Monday-Friday	Fee applies
Saturday	No charge
Sunday or Public Holiday	No charge*

*Unless vehicle is parked overnight

\$2.00 per 24hr period or part thereof applies.

This parking charge applies to all vehicles.

For more information on parking your vehicle visit transperth.wa.gov.au

Legend

- | | | | | | |
|----------------------------|---------------------|--------------|---------------------|-----------------------|--------|
| Pedestrian Crossing Lights | Transperth Parking | Bike Shelter | Road | Platform | Busway |
| Bus Stand Number | ACROD Parking | Motorbikes | Pathways | Concourse & Ramp | |
| | SmartParker Machine | Bike U-rails | Non-Accessible Area | Principal Shared Path | |
- North Point
- Scale
0 30m